

NHD-5.7B-LED Driver

LED Backlight Driver

RoHS Compliant

Newhaven Display International, Inc.

2661 Galvin Ct.

Elgin IL, 60124

Ph: 847-844-8795 Fax: 847-844-8796

www.newhavendisplay.com

nhtech@newhavendisplay.com

nhsales@newhavendisplay.com

Document Revision History

Revision	Date	Description	Changed by
0	07/28/2010	Initial Release	MC
1	6/1/16	Mechanical Drawing Updated	SB

Functions and Features

- HIMAX HA7101 LED Driver
- PWM control backlight brightness with Enable pin
- 5V power supply input for 9.9V output, for **NHD-5.7-320240WFB** series displays

ELECTRICAL CHARACTERISTICS

Parameter	Symbol	Condition	Min	Typ	Max	Unit
Operating Temperature Range	-	Absolute Max	-20	25	85	°C
Storage Temperature Range	-	Absolute Max	-30	25	100	°C
Input Voltage	Vin	-	3.3	5.0	5.5	V
Input Current (no load)	-	Vin=5V	-	1.2	-	mA
Input Current (with load)	-	Vin=5V	-	480	-	mA
Output Current	Iout	Vin=5V	-	140	-	mA
Output Voltage	Vout	Vin=5V	-	9.9	-	V

J1 Pin Description (user input)

Pin No.	Symbol	External Connection	Function Description
1	VCC	Power Supply	Supply Voltage for LED driver circuit
2	E	MPU	Enable input (PWM signal)
3	GND	Power Supply	Ground for LED driver circuit

Connector: **M125PR-03**

Recommended mating connector: **M125H-03** http://www.newhavendisplays.com/app_notes/M125H-03.pdf

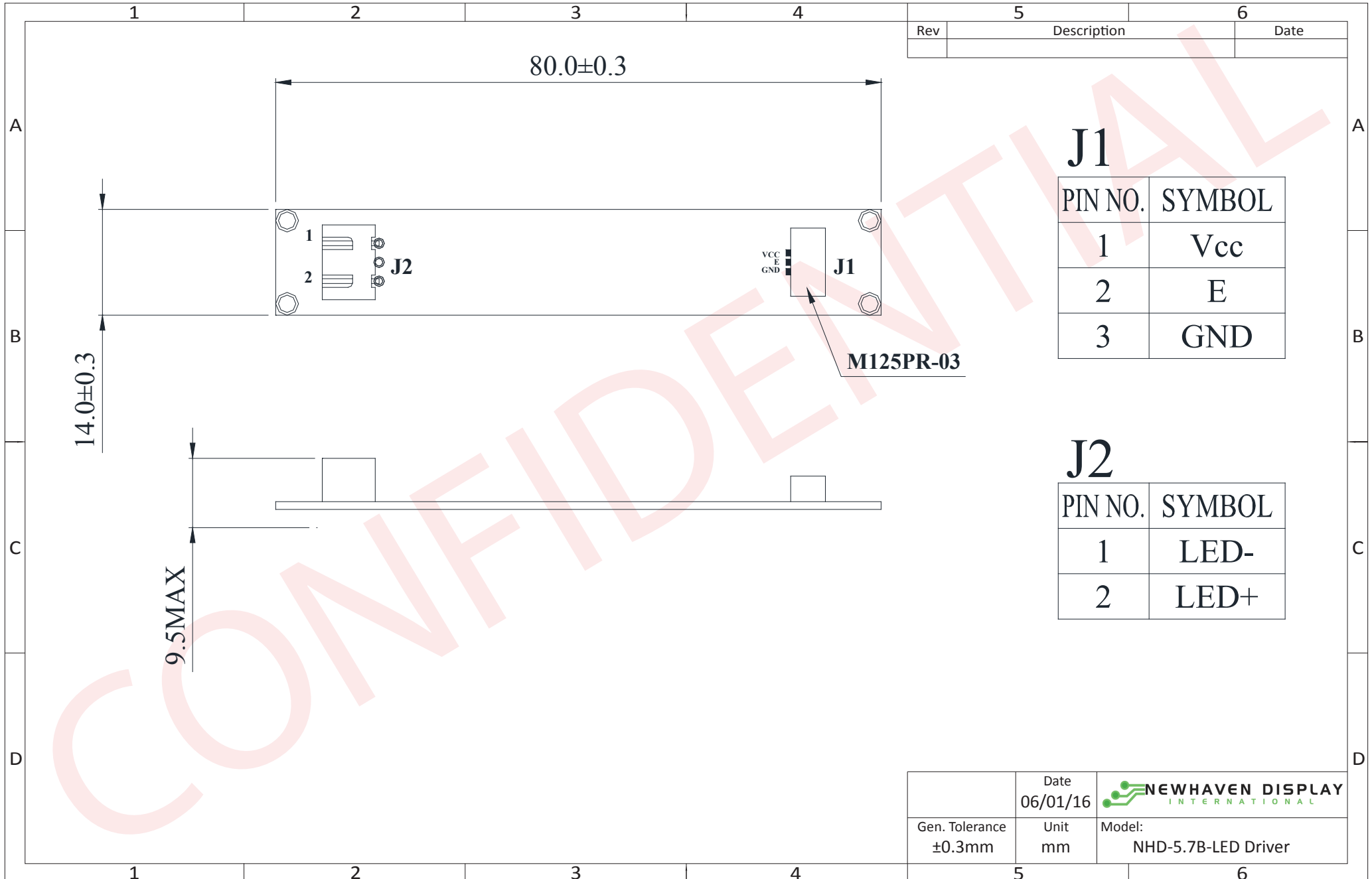
J2 Pin Description (output)

Pin No.	Symbol	External Connection	Function Description
1	LED-	K	Ground for LED backlight
2	LED+	A	Power for LED backlight

Connector: **S 3B-XH-A**

Connector on display backlight: **XHP-3**

Mechanical Drawing




Rev	Description	Date

J1

PIN NO.	SYMBOL
1	Vcc
2	E
3	GND

J2

PIN NO.	SYMBOL
1	LED-
2	LED+

	Date 06/01/16	 NEWHAVEN DISPLAY <small>INTERNATIONAL</small>
Gen. Tolerance ± 0.3 mm	Unit mm	

The drawing contained herein is the exclusive property of Newhaven Display International, Inc. and shall not be copied, reproduced, and/or disclosed in any format without permission.

Mouser Electronics

Authorized Distributor

Click to View Pricing, Inventory, Delivery & Lifecycle Information:

[Newhaven Display:](#)

[NHD-5.7B-LED Driver](#)